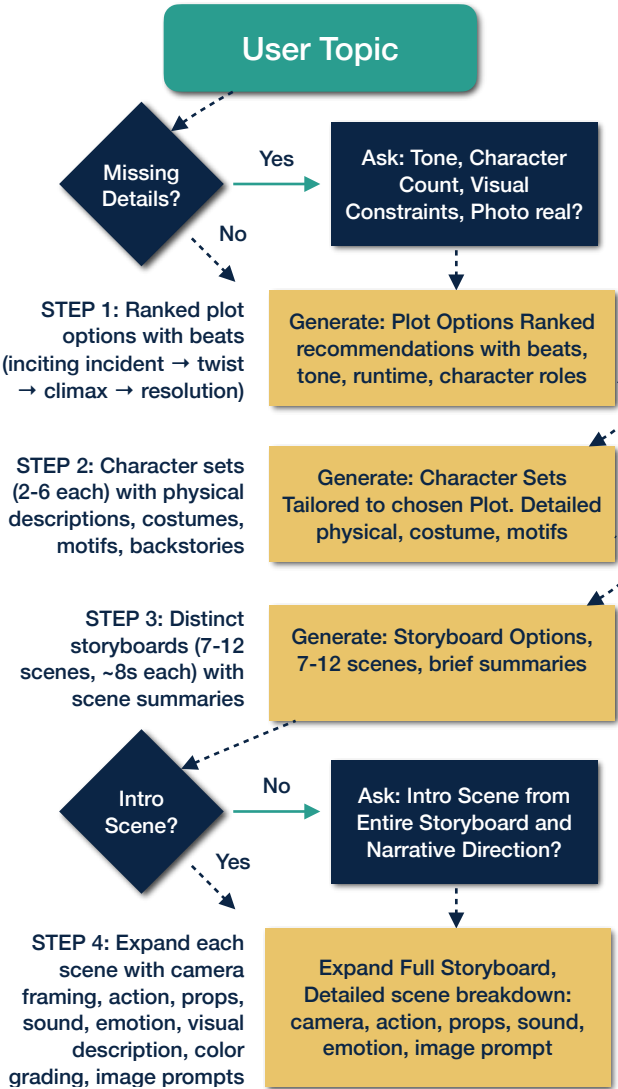


Generative Video Success Blueprint

Testing the Boundaries: Strategic Content
Choices for AI Video Generation

Content Planning

Every successful AI project starts with **verus**, a truth-grounded clarity. Use this flow for guided content creation, leveraging prompts and creative nudges.



AI and machine learning solutions grounded in truth and accuracy - Verus Data, LLC

Creating Ideal Visuals

Not all content can be created equally. Review your requirements with this matrix and use or adapt to fit. The only type not generally acceptable for this open-ended creation was technical documentation or demonstration

Ideal: Sweet spot for Capability	Adapt: Workable through techniques	Avoid: Limitations Pose Challenges
--	--	--

Video / Attribute	Example	Character Stability	Technical Precision	Sensitivity to Brand or IP	Many Human Interactions	Abstract Concepts
Product Patent / Marketing		Object drift	Hallucination	Original IP	Professional settings	Imaginative illustrations
Educational		Reusable character stills	Context appropriate	No rights conflicts	Direct-address format	Supports multiple viewpoints
Cultural Content		Frame consistency	Simple actions	Copyright rejections	Natural social scenarios	Abstract actions challenging
Character Animation		Frame-to-frame degradation	Simplified motions	Original characters	Personification Limits	Novel concepts
Children Focused		Appearance may vary	Process accuracy mixed	Moderation sensitive	Audio generation issues	Storyboarding only
Technical Docs	No Viable Candidate	Multi-scene drift	Procedural hallucinations	Brand violation potential	Task consistency	Concept over precision

Interactive Quality Tricks

Core Workflow

The Narration Alternative: For educational content, "Structure scenes as talking-to-camera segments with single characters. This works better than complex multi-character interactions for current models."

The Moderation Pre-Flight: Before generating character interactions or sensitive content:
"Review this scene for potential moderation triggers:
- Character proximity (high-fives, close interactions)
- Children as primary characters
- Copyrighted/iconic imagery
Suggest alternatives for flagged elements."



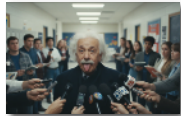
Contact Us for a Partnership Slot

Visual Correspondence

The Split-Screen Prep
For complex compositions (split-screen, picture-in-picture): "This scene uses split-screen. Generate each panel independently first, then composite. Acknowledge text overlays and sync'd actions may require post-editing."



The Copyright Avoidance: In STEP 1: "Avoid references to copyrighted characters, iconic meme images, or branded elements. Focus on original concepts that parallel [familiar theme] without direct IP infringement."



The Anchor Frame Loop: After generating Scene X: "Extract the final frame from this scene. Use it as the STARTING FRAME for Scene X+1 to maintain [character appearance/lighting/environment] consistency."



(c) 2025 Verus Data, LLC - <https://verus-data.com> - v1.0